

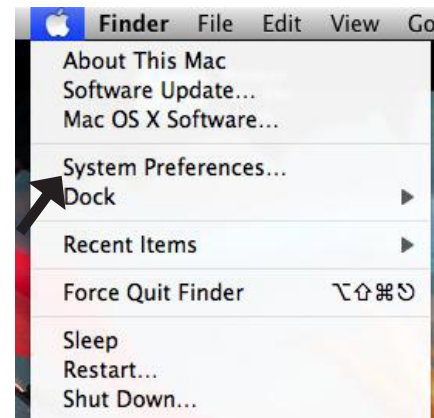
connecting to guest

Step 1 - Enabling your AirPort or other wireless card

1. Turn on your computer and make sure that the wireless card is activated. To do this, **click** the *AirPort status* icon on the menu bar located at the top. The *AirPort status* icon can be identified as a dot with three concentric quarter circles emanating outward. This icon is used to quickly change wireless settings and verify wireless connection status. If you see this icon, skip on to **Step 2 - Connecting to the Guest Network**.



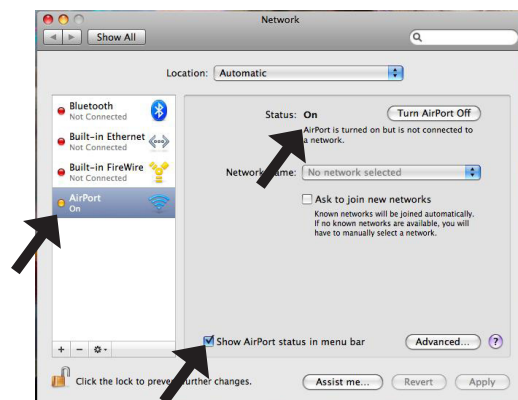
2. If the *AirPort status* icon is not on the menu bar, **click** the *Apple* | **click** *System Preferences...*



3. In *System Preferences*, **click** *Network*.

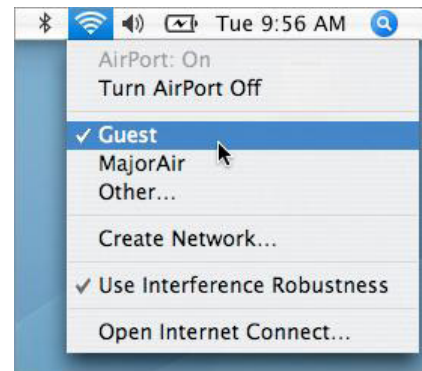


4. **Select** *AirPort* | **check** *Show AirPort status in menu bar*. Ensure that the *Status* is *On*. If it is *Off*, **click** *Turn AirPort On*.



Step 2 - Connecting to the Guest network

1. Click the *AirPort status* icon | click *Guest* from the list of available networks to connect. At this point, you are now connected to the *Guest* network. If you cannot complete this step because *Guest* is not in the list, skip to **Step 3 - Manually Connecting to the Guest Network**; otherwise, proceed to **Step 4 - Agreeing with the Millsaps College Policy for the Ethical Use of Computing Facilities**.



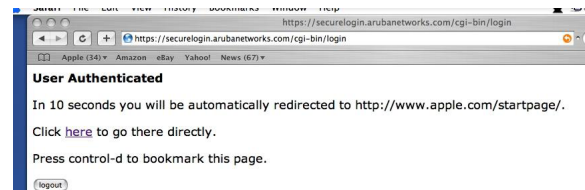
Step 3 - Manually connecting to the Guest network

1. If *Guest* is not visible in the above list, click *Other...*
2. Enter the following information:
Network Name: Guest
Wireless Security: None
3. Click *OK*. Your Mac should now automatically connect to the *Guest* network once you are in its range.



Step 4 - Agreeing with the Millsaps College Policy for the Ethical Use of Computing Facilities

1. Open Safari. Your browser will be automatically redirected to the Aruba login screen. Please take a moment to read the *Acceptable Use Policy*.
2. Type in your email address under *Guest User* and click *Log In*.



After logging in as a Guest User, you will receive confirmation of successful authentication. This screen will automatically redirect you to your homepage in ten seconds.

For further assistance, please call, e-mail or visit:

ITS Helpdesk at 601-974-1144, helpdesk@millsaps.edu, or Academic Complex 105
Support for Millsaps Faculty, Staff, Graduate Students, Commuter Students, and Guests

ResNet at 601-974-1899, resnet@millsaps.edu, or New South Hall 125
Support for On-Campus Undergraduate Millsaps Students