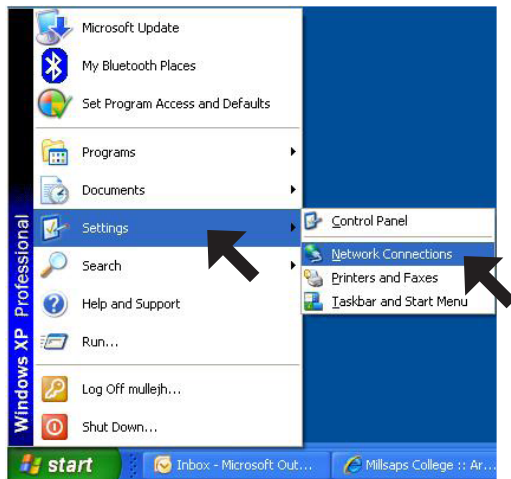
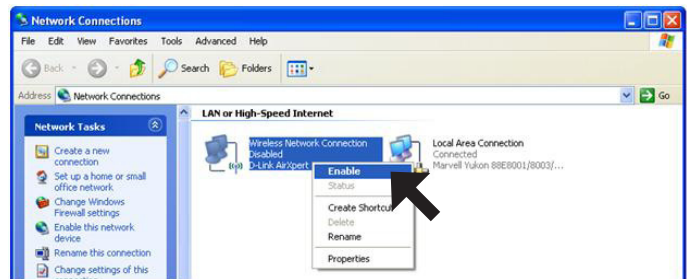


connecting to guest

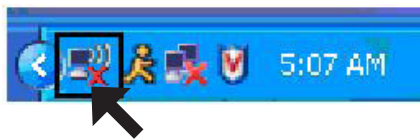
1. Verify that your wireless card is activated.
To do this, **click Start | click Settings | click Network Connections.**



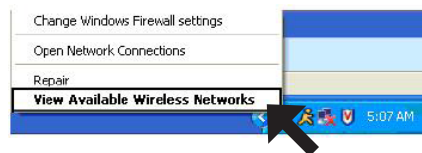
2. In *Network Connections*, **right-click Wireless Network Connection | click Enable.**



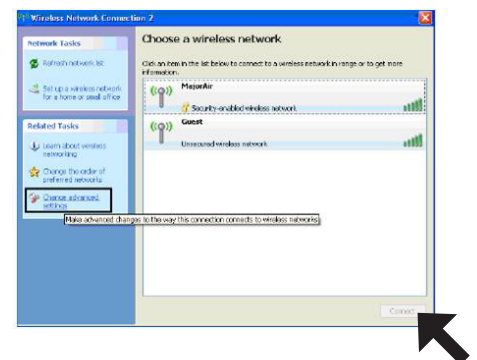
Notice the *Wireless Connection* icon in the bottom-right of the screen.



3. **Right-click the Wireless Connection icon | click View Available Wireless Networks.**



4. **Click Guest | click Connect.**



5. **Open Internet Explorer.**

6. Your browser will be automatically redirected to the *Aruba* login screen. Please take a moment to read the *Acceptable Use Policy*.

7. **Type** in your email address under *Guest User* | **click Log In.**



8. After logging in as a *Guest User* you will receive confirmation of successful authentication. The screen will automatically redirect you to your homepage in ten seconds.

User Authenticated

In 10 seconds you will be automatically redirected to <http://www.google.com/>.

Click [here](#) to go there directly.

Click [here](#) to bookmark this page.

For further assistance, please call, e-mail or visit:

ITS Helpdesk at 601-974-1144, helpdesk@millsaps.edu, or Academic Complex 105
Support for Millsaps Faculty, Staff, Graduate Students, Commuter Students, and Guests

ResNet at 601-974-1899, resnet@millsaps.edu, or New South Hall 125
Support for On-Campus Undergraduate Millsaps Students