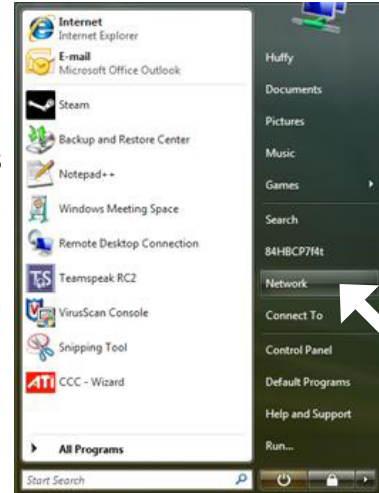
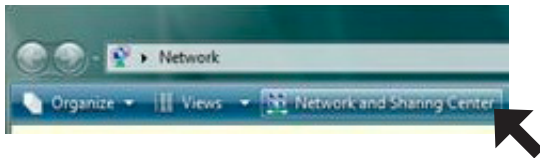


connecting to guest

1. Turn on your computer and make sure that the wireless card is activated. To do this, **click Start | click Network**.



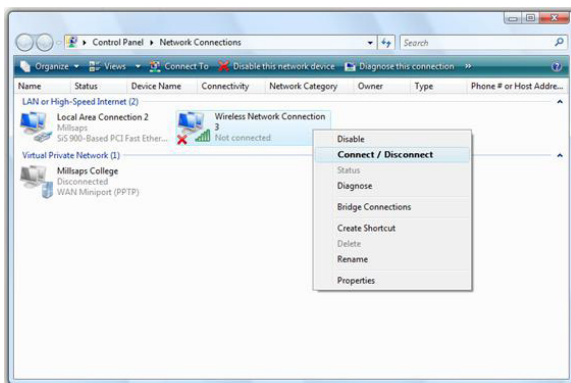
2. Click **Network and Sharing Center**.



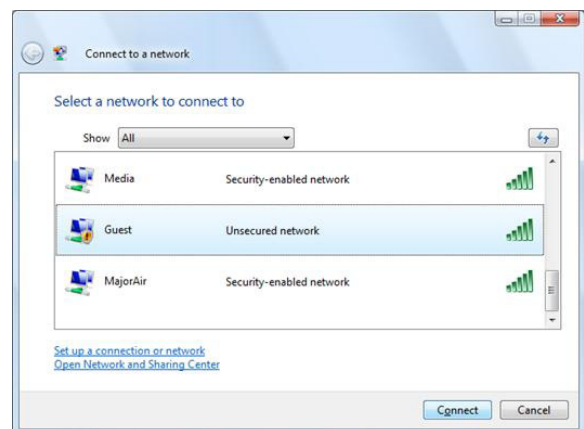
3. Click **Manage network connections**.



4. **Right click Wireless Network Connection | click Connect/Disconnect**.



5. **Select Guest | click Connect**.



6. Open Internet Explorer.

Your browser will automatically be redirected to the Aruba login screen. Please take a moment to read the *Acceptable Use Policy*.

Type in your email address under *Guest User*.

Click *Log In*.

After logging in as a Guest user, you will receive confirmation of successful authentication. This screen will automatically redirect you to your homepage in ten seconds.



For further assistance, please call, e-mail or visit:

ITS Helpdesk at 601-974-1144, helpdesk@millsaps.edu, or Academic Complex 105
Support for Millsaps Faculty, Staff, Graduate Students, Commuter Students, and Guests

ResNet at 601-974-1899, resnet@millsaps.edu, or New South Hall 125
Support for On-Campus Undergraduate Millsaps Students