

# connecting to majorair

## Requirements for Access:

You must have a computer equipped with an 802.11b/g-compatible wireless card. The supported encryption type is available only with Microsoft Windows XP with Service Pack 2+ installed.

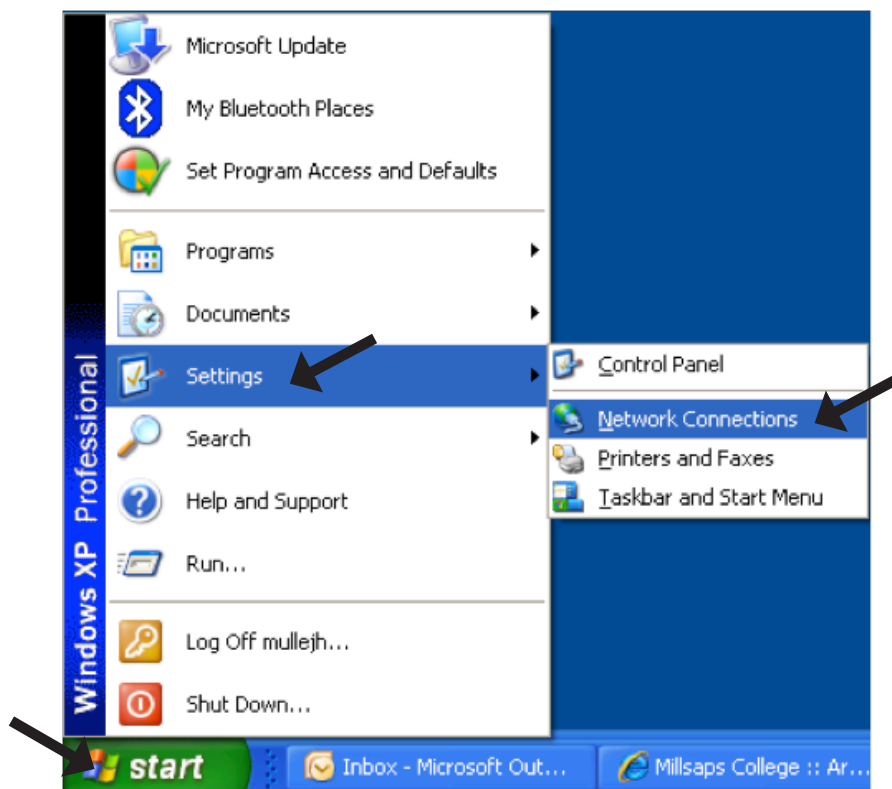
The first two steps may be done anywhere. The last step must be completed while in a wireless enabled area.

---

---

## Step One - Enabling Your Wireless Card:

1. Turn on your computer and make sure that the wireless card is activated. To do this **Select Start | Settings | Network Connections**.



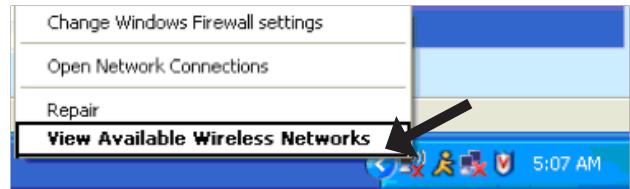
2. In Network Connections, **Right-click your wireless card | Click Enable**.

## Step Two - Setting Up Your Connection To MajorAir:

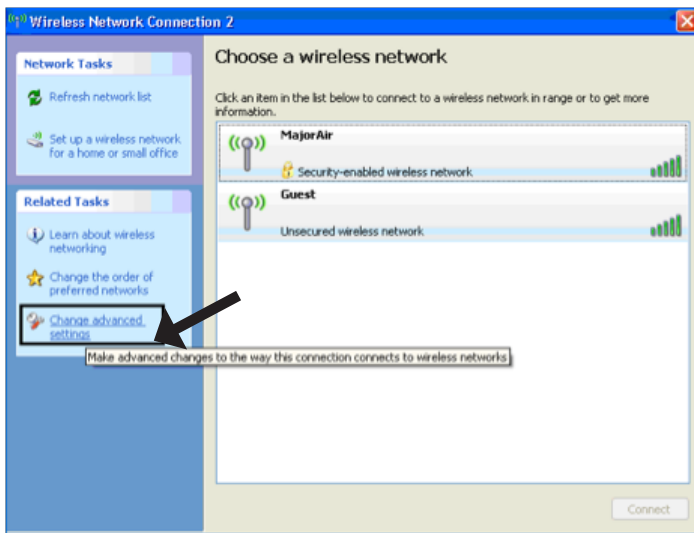
1. Notice the Wireless Connection icon in the bottom-right of the screen.



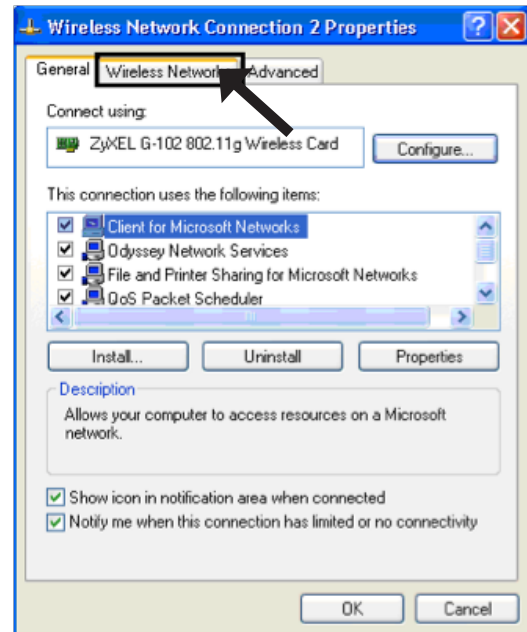
2. Right-click the Wireless Connection icon | Click View Available Wireless Networks.



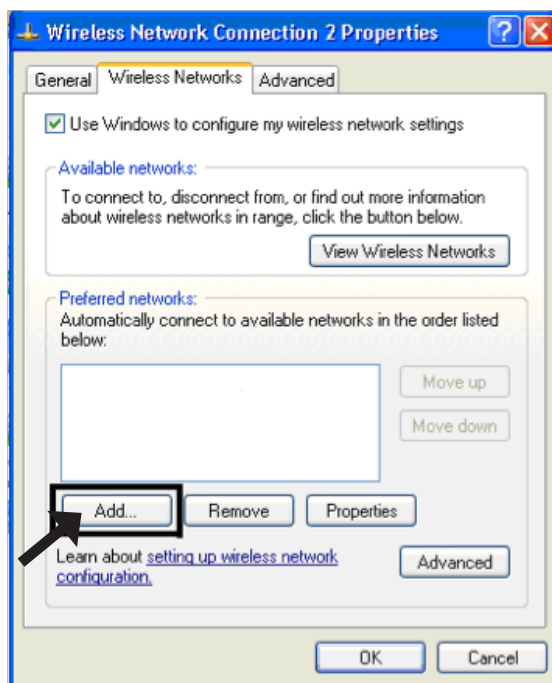
3. Click Change Advanced Settings.



4. Select the Wireless Networks tab.

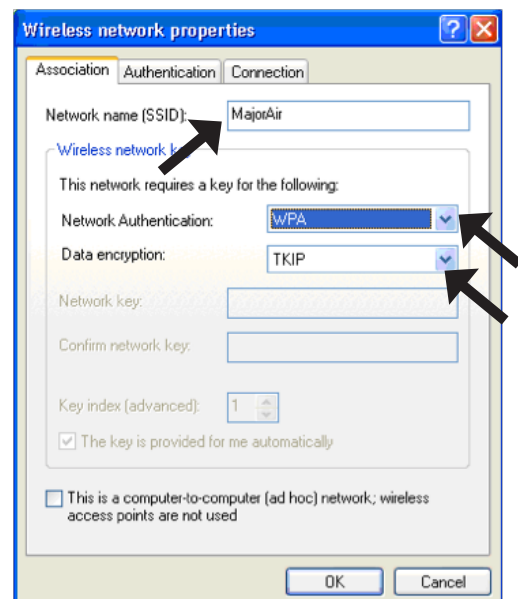


5. Click Add.



6. Enter the following information:

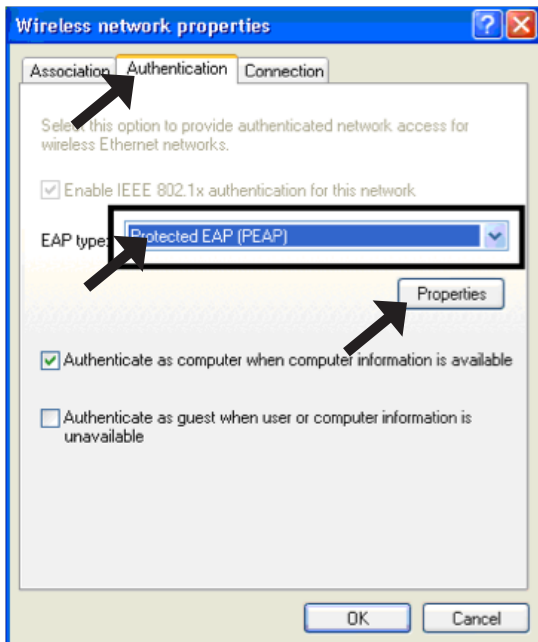
Network name: MajorAir  
Network Authentication: WPA  
Data Encryption: TKIP



7. Select the Authentication tab.

8. Click the selection box for EAP type: to change the EAP type to Protected EAP (PEAP).

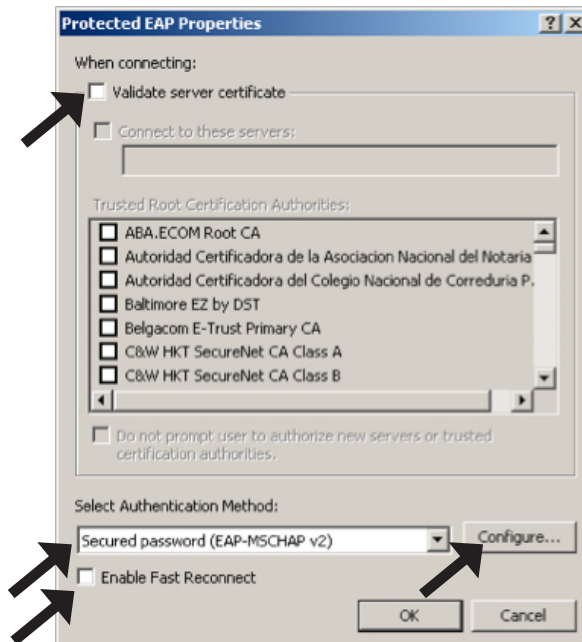
9. Click Properties



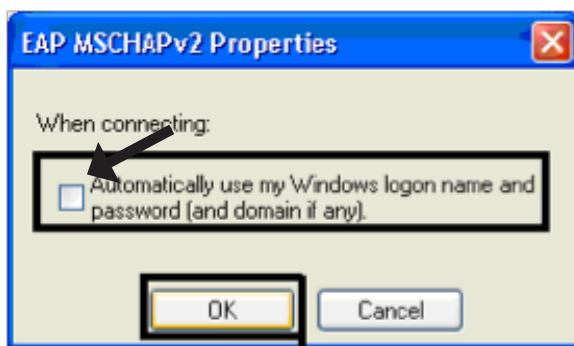
10. Deselect Validate server certificate.

11. Click the selection box for Select Authentication Method and verify that Secured Password (EAP-MSCHAP v2) is chosen.

12. Check Enable Fast Reconnect | Click Configure...

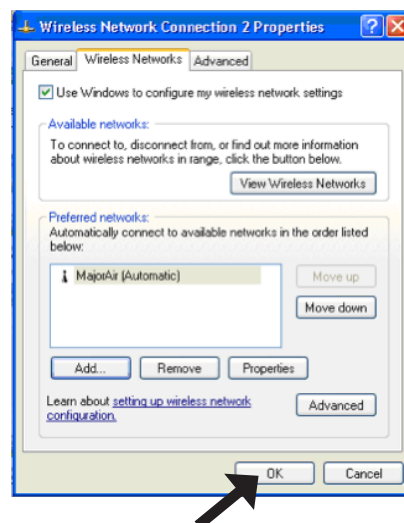


5. Deselect Automatically use my Windows logon name and password (and domain if any). Click OK



6. Click OK | OK. Now your window should look like the image on the right.

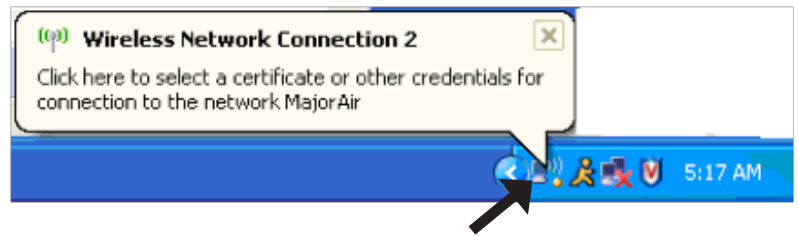
7. Click OK one last time.



## Step Three - Connecting to MajorAir:

If you are in range of MajorAir, you should see a Wireless Connection Balloon Tip expand from the Wireless Connection icon indicating that you must input your Millsaps credentials.

1. Click *Wireless Connection icon or the Wireless Connection Balloon Tip*



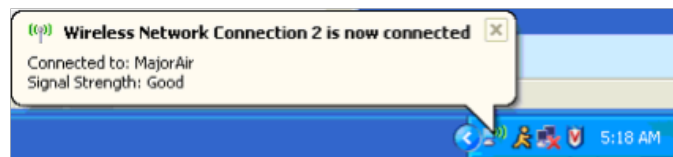
2. Enter the following information:

User name: [Millsaps username]  
Password: [Millsaps password]  
Logon domain: MILNTDOM

3. Click *OK*.



You should now see a Wireless Connection Balloon Tip expand from the Wireless Connection icon indicating that you are connected to Major Air.



You are now connected to the Millsaps wireless network, MajorAir.

## For further assistance, please call, email or visit:

ITS Helpdesk at 601-974-1144, [helpdesk@millsaps.edu](mailto:helpdesk@millsaps.edu), or Academic Complex 105  
Support for Millsaps Faculty, Staff, Graduate Students, Commuter Students, and Guests

ResNet at 601-974-1899, [resnet@millsaps.edu](mailto:resnet@millsaps.edu), or New South Hall 125  
Support for On-Campus Undergraduate Millsaps Students