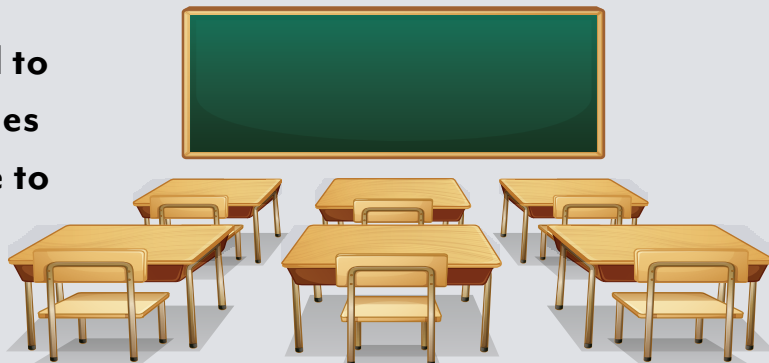


RETURN TO CAMPUS

— GUIDELINES FOR ON CAMPUS ACTIVITIES —

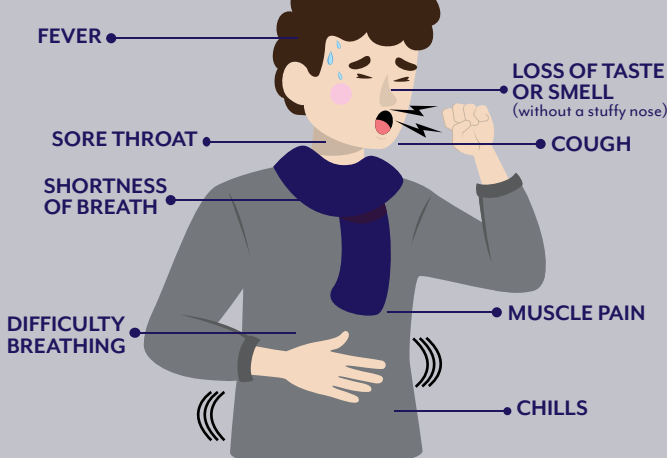
All students are required to adhere to these guidelines while on campus. Failure to do so puts our entire community at risk.



SELF-MONITOR

— FOR SYMPTOMS —

SYMPTOMS INCLUDE:



It is important for you to be sure you do not have any signs or symptoms of COVID-19 before you come to class or campus. You should report symptoms using this [form](#).

SYMPTOMS?

— FOLLOW THESE STEPS —

If you develop any of the symptoms listed above or on the CDC website, it is critically important that you take the appropriate steps. If you are instructed to isolate or quarantine, or if you test positive for COVID-19, you will not be allowed to come to class or campus and are required to report the positive test result to the health center immediately. You should utilize these [forms](#) to make the transition to online learning.



TEMPERATURE CHECKS

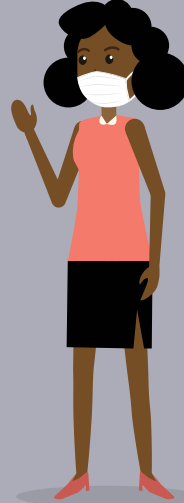


Millsaps College will not conduct daily temperature checks. You are asked to self-monitor by taking your own temperature each day before coming to class or campus. The college reserves the right to conduct random temperature checks on campus.

SOCIAL DISTANCING



Individuals should practice social distancing at a minimum of six feet. This distance must be observed at all times unless activity requires closer physical space. If you are in an office or meeting space, this means a separation of seats and limiting usage of common work areas whenever possible. Meetings unable to adhere to this standard should be moved to a larger space or should go online. For classrooms, laboratories and studios that means maintaining the classroom setup appropriately, avoiding face-to-face orientations and wearing a mask/neck gaiter at all times.



6 FEET

HYGIENE

Hygiene should become a priority. All members of the Millsaps community should follow CDC guidelines for handwashing and the use of hand sanitizer (with a minimum of 60% alcohol) when soap and water are unavailable. Cleaning and disinfecting of surfaces must take place using provided materials.



FACEMASKS

Masks/neck gaiters are required. Masks/neck gaiters should be worn in interactions with the public and in groups and always when social distancing is not possible. We recommend wearing them when you are walking across campus. Masks/neck gaiters may be removed if you are alone and in a private space.



AROUND CAMPUS

The college will place signs around campus as reminders to maintain social distancing, wash your hands, wear a mask/neck gaiter, etc. Please be mindful of these signs and observe the recommendations provided.

All communications and information from the college related to COVID-19 are available on the Millsaps website; click the link at the top of the homepage at www.millsaps.edu. We encourage you to check this page regularly for the most up-to-date information.

MILLSAPS
COLLEGE